


# PRODUCT SHEET

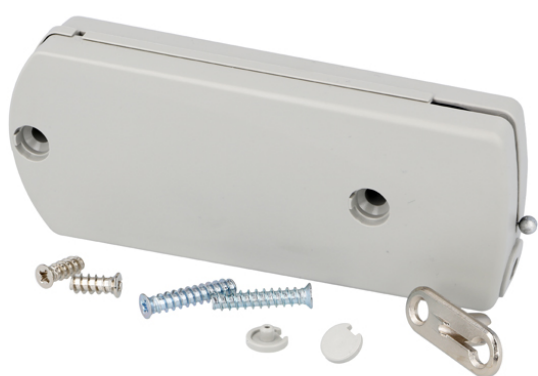
## Description:

Flap Stay, "STRING", Model B, 60 N, Grey, W/Adjustable Opening Angle & Soft Open & Self Closing Mechanism, For, Horizontal or Vertical Use, F/Left or Right Hand Use, Incl. Front Fixing Bracket - NPL, Max Flap Weight: 9 kg

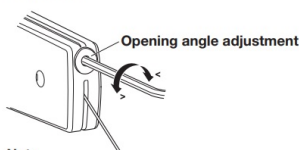
## Item number:

15.10.360-0

Units	Box	Carton	HS Code	Barcode
Pcs.	1	10	8302420090	
				5704866056809



### Adjustment

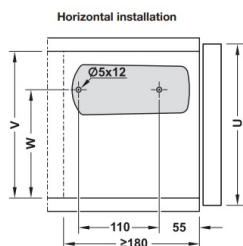


**Note**  
Ease door weight during adjustment.

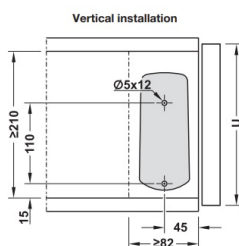
### Fitting

Material: Housing: Plastic; Front Fixing Brackets: Zinc Alloy  
Finish: nickel-plated

**Supplied With**  
Front fixing bracket  
Mounting material

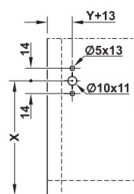
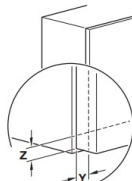


U	V	W	X
210-270	≥173	135	123 + Z
270-480	≥186	148	144 + Z



U	X
230-480	123 + Z

### Front fixing



U = door height  
V = internal cabinet height  
W = drill hole height  
X = center of front fixing  
Y = lateral door overlay dimension  
Z = bottom door overlay dimension

## SISO A/S

Mileparken 11  
DK-2740 Skovlunde  
Denmark  
VAT: DK 24786013

Phone +45 45 830 900

www.siso.dk  
siso@siso.dk

Danske Bank  
Nytorv Branch  
Copenhagen  
SWIFT: DABADKKK

Account no.  
4180 3112 112936  
IBAN Account  
DK7230003112112936